

CADET™ ELONGATED 14" ROUGH-IN TOILET

- 2898.014**
 - Vitreous china
 - Low-consumption (6.0 Lpf/1.6 gpf)
 - 14" roughing-in
 - Elongated siphon action jetted bowl
 - Fully glazed 2" trapway
 - AquaForce flushing technology
 - Close-coupled tank with raised lip detail on tank cover
 - Color-matched trip lever
 - Speed Connect™ tank/bowl coupling system
 - Sanitary bar on bowl
 - 2 bolt caps
 - 100% factory flush tested



- 3459.016** Bowl
- 4114.016** Tank

Nominal Dimensions:
 800 x 495 x 762mm
 (31-1/2" x 19-1/2" x 30")

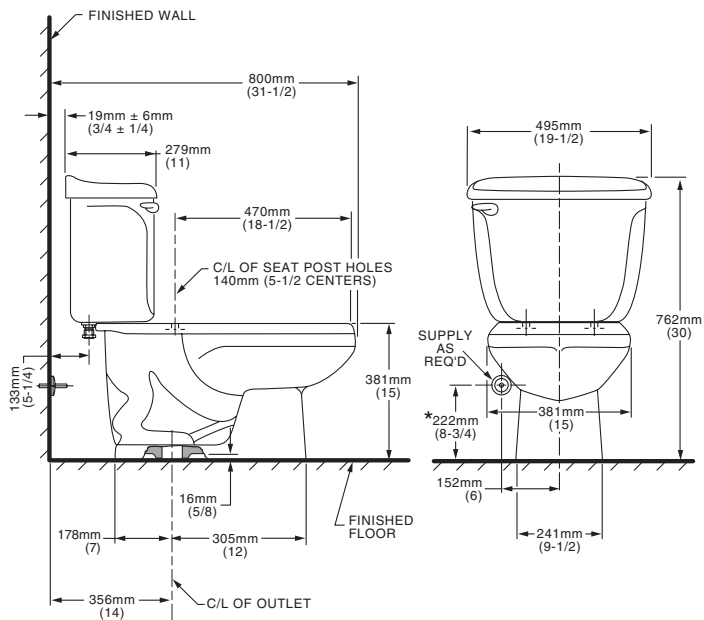
Fixture only, seat and supply by others

Alternate Tank Configurations Available:

- 4114.600** Tank complete with tank cover locking device
- 4114.800** Tank complete with trip lever located on right hand side

Compliance Certifications - Meets or Exceeds the Following Specifications:

- ASME A112.19.2M for Vitreous China Fixtures - includes Flush Performance, Ball Pass Diameter, Trap Seal Depth and all Dimensions



To Be Specified:

- Color:
- Seat: American Standard #5324.019 "Rise and Shine" solid plastic closed front, seat with cover.
- Seat: American Standard #5311.012 "Laurel" molded closed front seat with cover.
- Alternate Seat:
- Supply with stop:

NOTES:

THIS COMBINATION IS DESIGNED TO ROUGH-IN AT A MINIMUM DIMENSION OF 356MM (14") FROM FINISHED WALL TO C/L OF OUTLET.
 * DIMENSION SHOWN FOR LOCATION OF SUPPLY IS SUGGESTED. SUPPLY NOT INCLUDED WITH FIXTURE AND MUST BE ORDERED SEPARATELY.

IMPORTANT: Dimensions of fixtures are nominal and may vary within the range of tolerance established by ANSI Standard A112.19.2. These measurements are subject to change or cancellation. No responsibility is assumed for use of superseded or voided pages.

Repair Parts Catalog

Fixture Colors & Faucet Finishes

American Standard

Fixtures

Substitute XXX with the appropriate 3-digit color code as follows:

Color	Abbreviation	XXX Color Code
White	WHT	020
Bone	BON	021
Fawn Beige	FBG	045
Americana Brown	ACB	142
Saffron Yellow	SFY	162
Dresden Blue	DRB	163
Silver	STS	165
Autumn Sunset	ASU	169
Chianti	CHI	170
Shell	SHL	173
Heather	HTR	174
Black	BLK	176
Honeydew	HNY	177
Blond	BLN	178
Orchid	ORC	179
Pearl White	PWH	180
Champagne	CHP	181
Light Mink	LMK	190
Light Turquoise	LTQ	191

Color	Abbreviation	XXX Color Code
Light Turquoise	LTQ	191
Classic Mink	CLM	192
Classic Turquoise	CLT	193
French Blue	FRB	196
Aquamarine	AQM	197
Sunshine	SUN	200
Peach Blossom	PBL	201
Candlelyght	CAN	202
Midnight Sky	MDS	206
Twilite's Glow	TWI	207
White Heat	HEA	208
Rhapsody Blue	RHB	209
Loganberry	LOG	210
Rain Forest	RAF	211
Warm White	WAW	212
Euro White	ERW	215
Linen	LIN	222
Daydream	DAY	225
Spring	SPR	227

Faucets

Substitute YYY with the appropriate 3-digit color code as follows:

Finish	YYY Color Code
Chrome	002
Matte Chrome	003
Rough Chrome	004
White	020
Bone	021
White/Chrome Mixage	025
White/Brass (PVD) Mixage	028
Black Nickel/Brass Mixage (PVD)	062
Black Nickel (PVD)	072
Blacksmith (PVD)	078

Finish	YYY Color Code
White/Gold Mixage	092
Gold	094
Polished Brass (PVD)	099
Satin (PVD) /Chrome Mixage	221
Velvet	285
Velvet/Brass (PVD) Mixage	287
Chrome/Gold Mixage	294
Satin (PVD)	295
Satin/Brass Mixage (PVD)	297
Chrome/Brass (PVD) Mixage	299